

KILN & LODGE

ESTATE AGENTS : REDEFINED



26 Plover Walk

Chelmsford CM2 8XX

Guide Price £375,000 to £400,000

26 Plover Walk

Chelmsford, CM2 8XX



- Immaculate Condition
- Tile Kiln Location
- Re-fitted Kitchen
- Great Sized Rear Garden
- Three Bedrooms
- Close to Schools & Amenities
- Open Plan Kitchen/Diner
- Re-fitted Bathroom Suite
- Garage to Rear

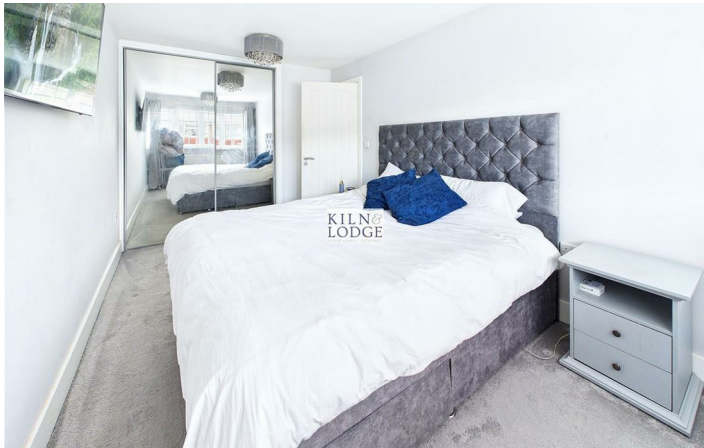
Nestled in the desirable area of Plover Walk, Chelmsford, this immaculate end terrace house presents a wonderful opportunity for families and professionals alike. Boasting three well-proportioned bedrooms, this property is designed for modern living and is in excellent condition throughout.

Upon entering, you will find a spacious open plan lounge that provide ample space for relaxation and entertaining. The heart of the home features a modern kitchen and a re-fitted bathroom suite, showcasing contemporary design and functionality. Each room is filled with natural light, creating a warm and welcoming atmosphere.

The property is ideally situated in the Tile Kiln location, which is renowned for its proximity to local schools, making it an excellent choice for families. The good-sized garden at the rear offers a private outdoor space, perfect for enjoying sunny days or hosting gatherings. Additionally, the garage provides convenient storage or parking options.

This charming home is a perfect blend of comfort and modernity, making it a must-see for anyone looking to settle in Chelmsford. With its appealing features and prime location, this property is sure to attract interest. Don't miss the chance to make this delightful house your new home.





Floor Plan



These particulars, whilst believed to be accurate are set out as a general outline only for guidance and do not constitute any part of an offer or contract. Intending purchasers should not rely on them as statements of representation of fact, but must satisfy themselves by inspection or otherwise as to their accuracy. No person in this firm's employment has the authority to make or give any representation or warranty in respect of the property.

